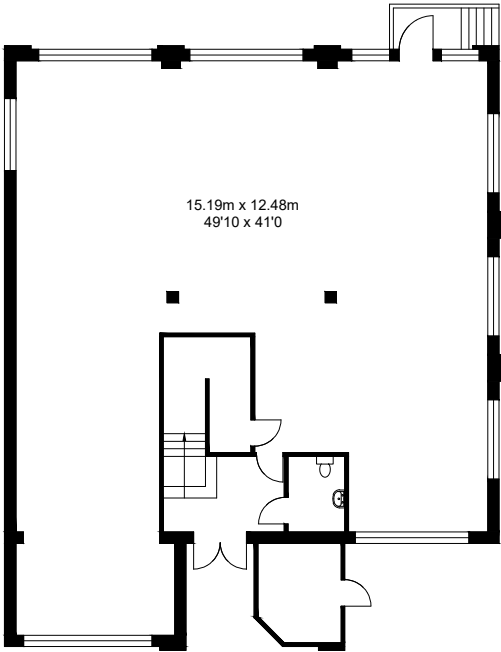
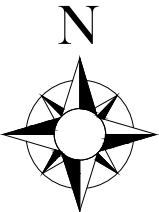


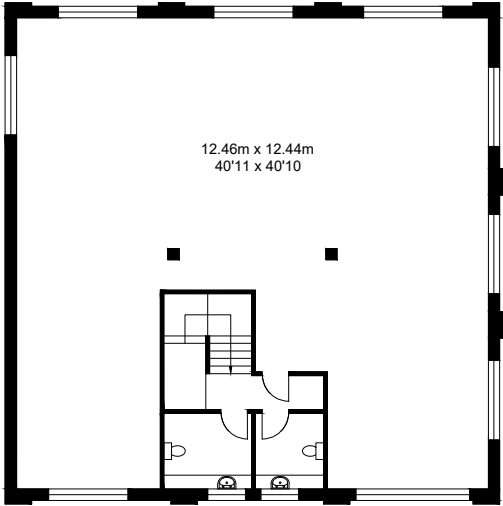
J2 Vale House, Pynes Hill, Exeter, EX2 5AZ

TOTAL FLOOR AREA 3537.65 SQ FT / 328.66 SQM



GROUND FLOOR

APPROX. GROSS INTERNAL FLOOR AREA 1863.87 SQ FT / 173.16 SQM



FIRST FLOOR

APPROX. GROSS INTERNAL FLOOR AREA 1673.78 SQ FT / 155.50 SQM

1:200 CM @ A4



SCALE: From the plan to be scaled. the above scale bar must measure correct, e.g. 10 Centimeters when printed



Non Domestic EPCs & Land Registry Compliant Plans

www.legallezsurveys.co.uk

07860 611568

drawing title J2 Vale House, Pynes Hill, Exeter, EX2 5AZ

scale 1:200 CM @ A4

copyright

date 06 December 2023