



# Osprey House

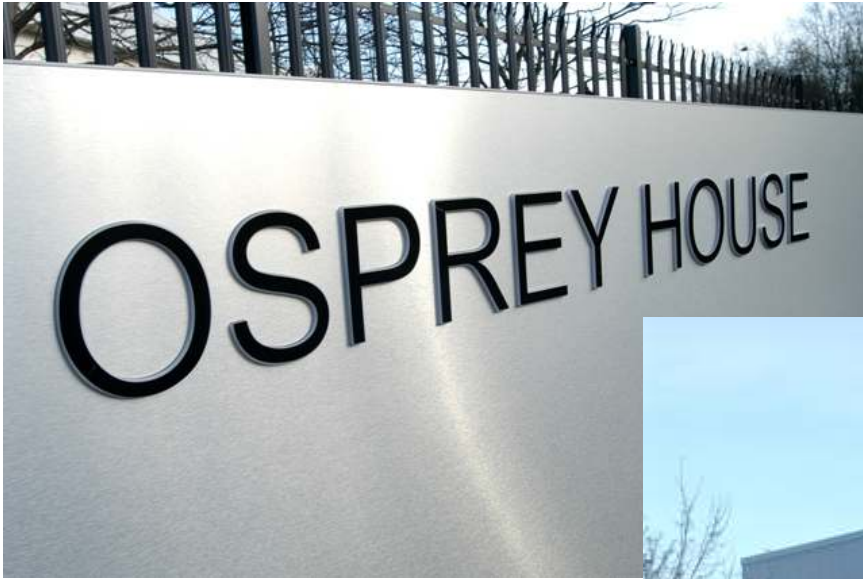
Sowton, Exeter EX2 7WN



PEARCE  
PROPERTY CONSULTANTS  
07971 278 386

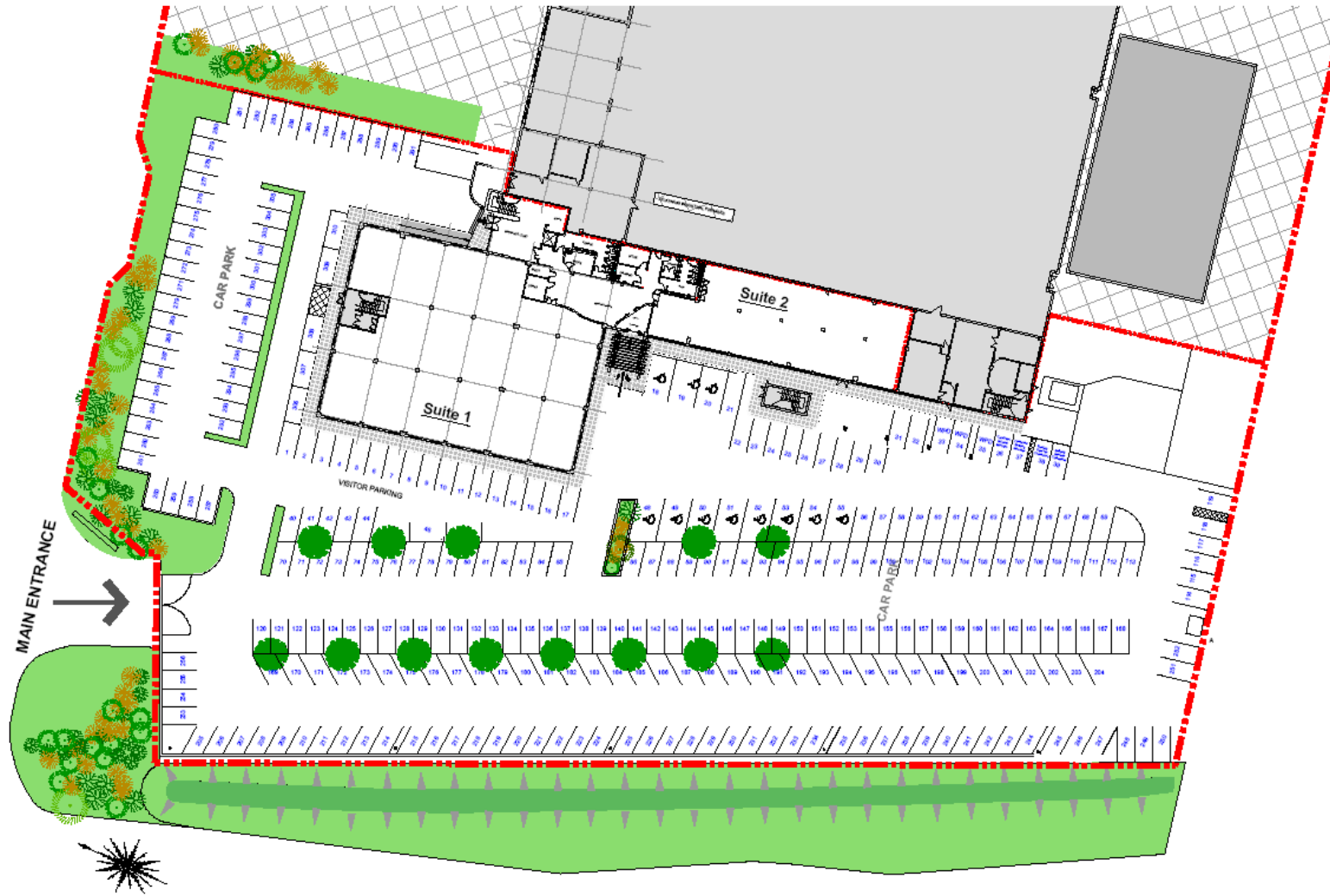


JLL®  
01392 423 696  
[jll.co.uk/property](http://jll.co.uk/property)



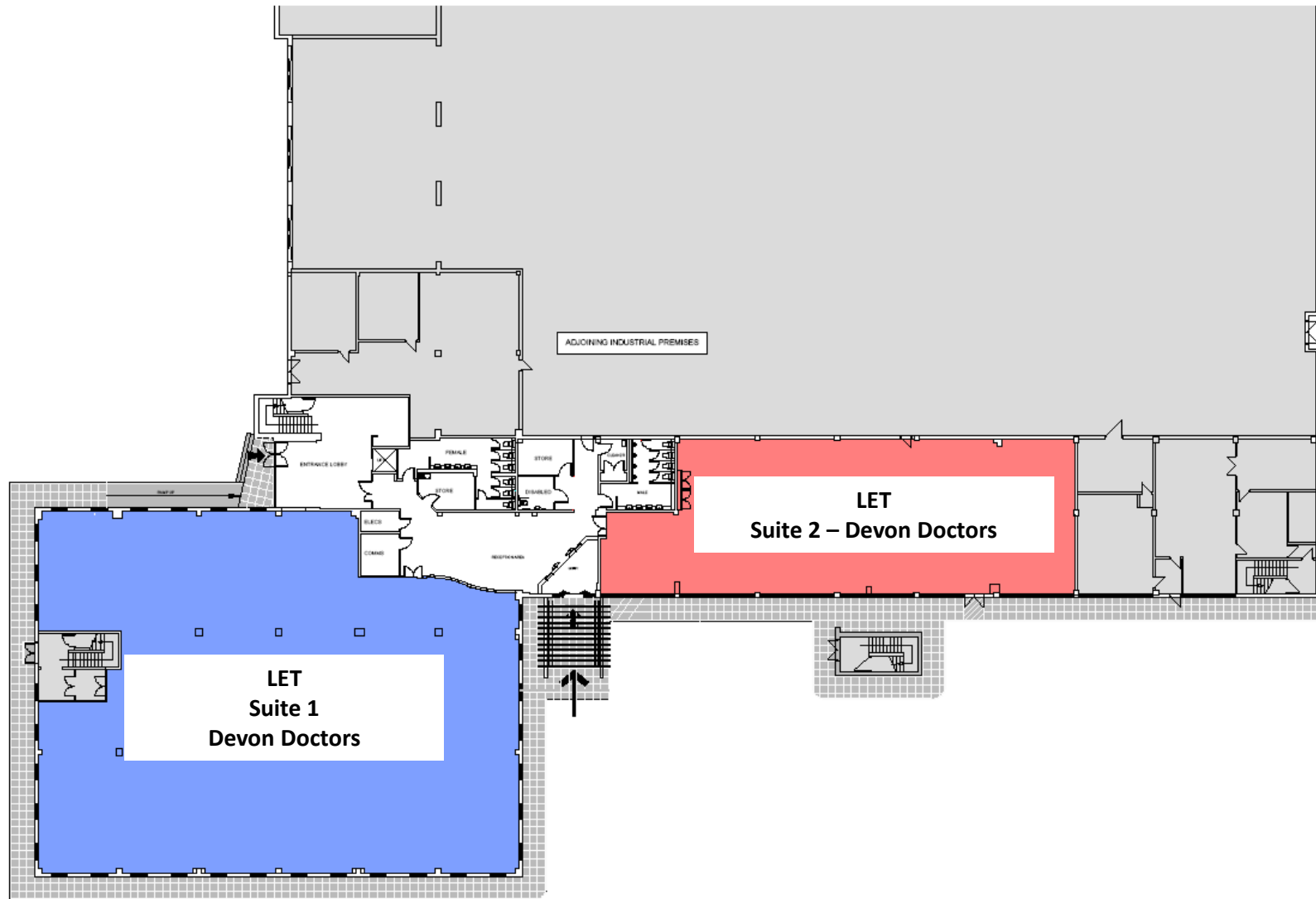
**Osprey House**  
Main Entrance





# Osprey House

## Site Plan



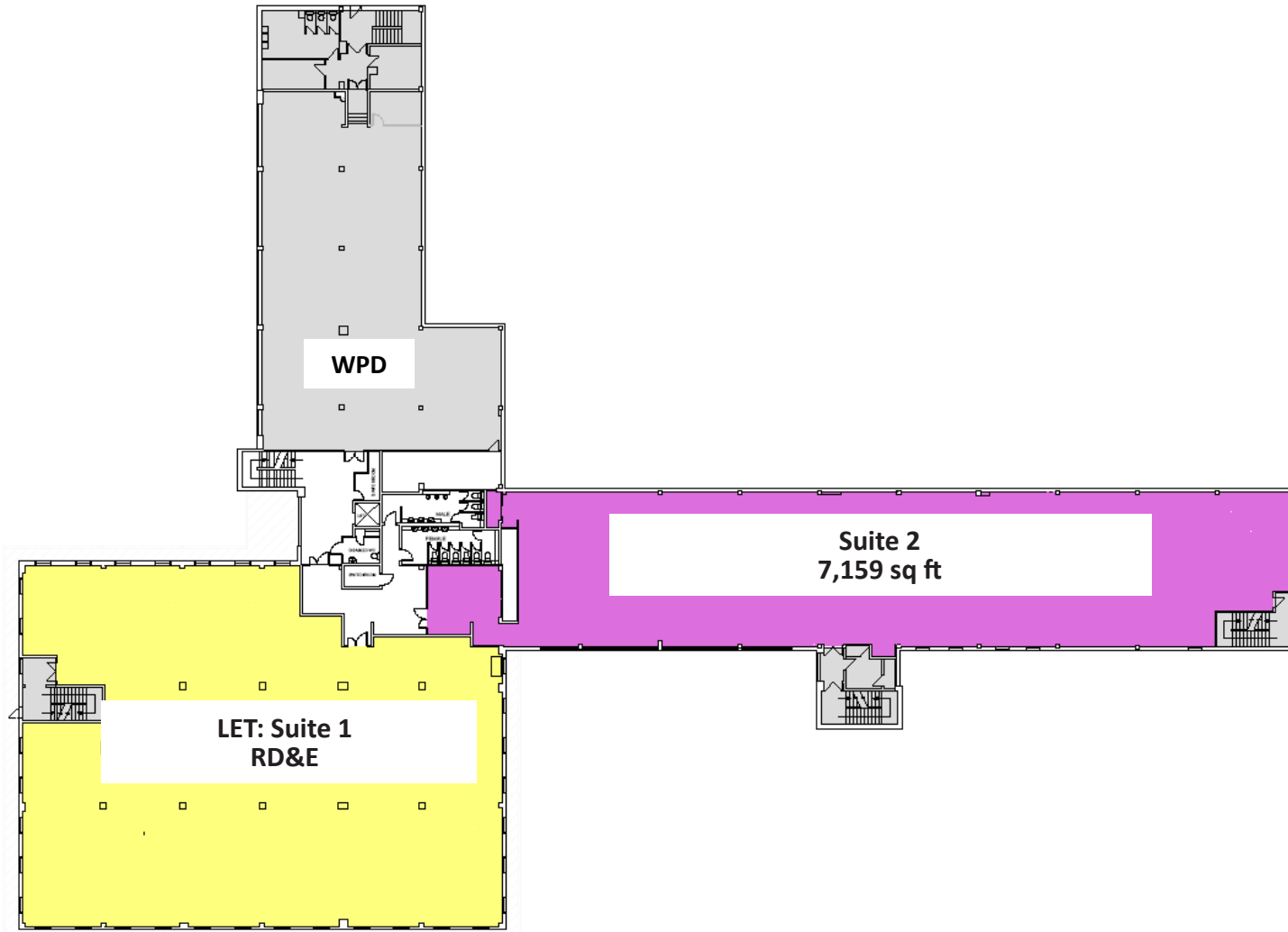
# Osprey House

Ground Floor Plan

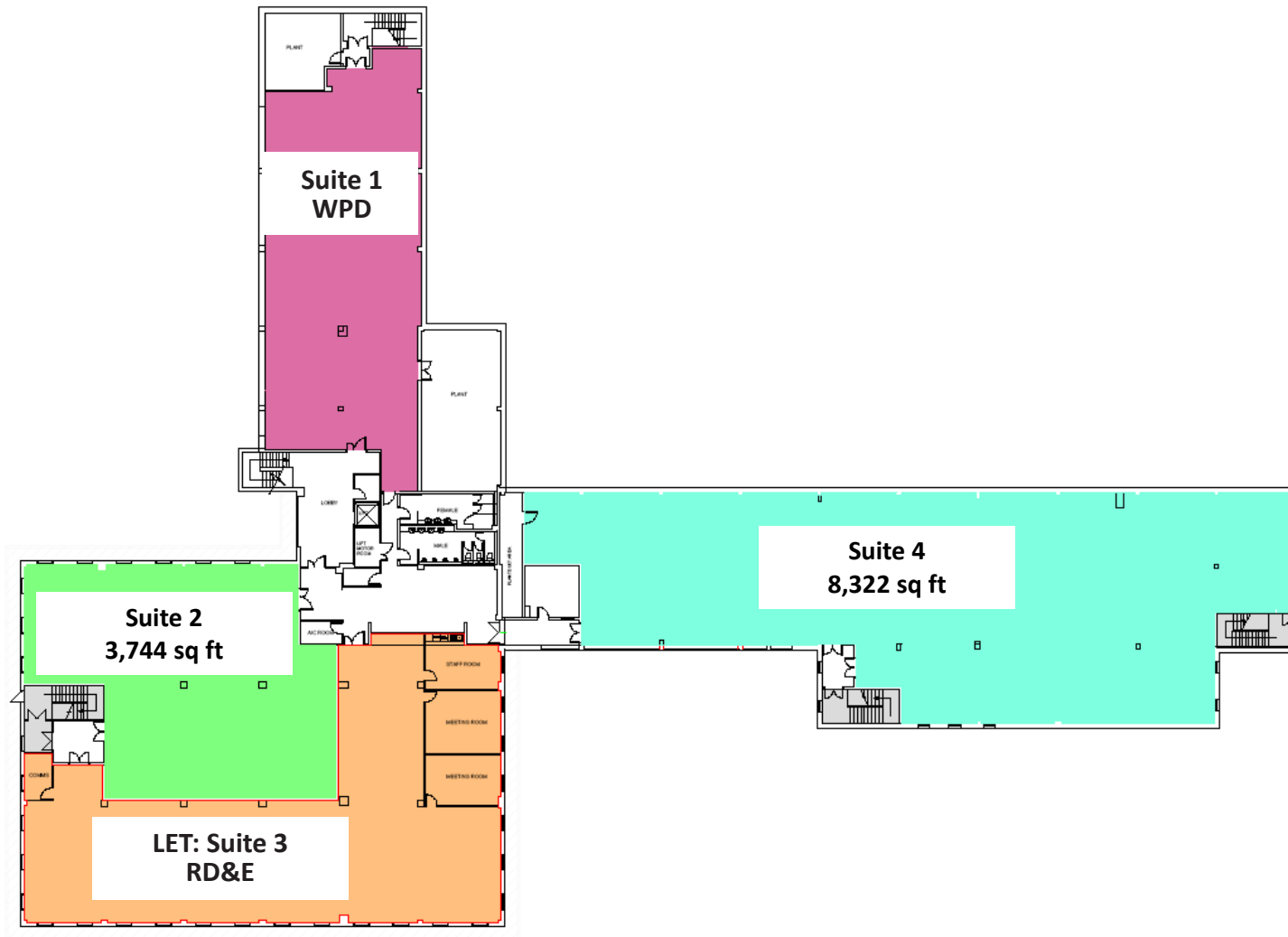


**Osprey House**  
Ground Floor Suites





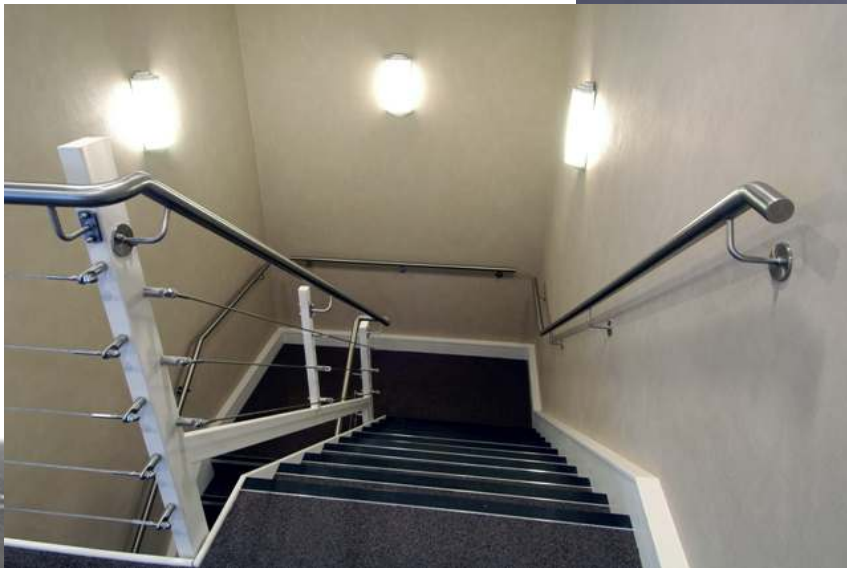
**Osprey House**  
First Floor Plan



**Osprey House**  
Second Floor Plan

Occupier	Location	Refurbished		Parking Spaces
		Let	Available	
Devon Doctors	Ground Floor North Suite 1	Let		
Devon Doctors	Ground Floor Suite 2	Let		
RD&E	First Floor North Suite 1	Let		
Vacant	First Floor South Suite 2		7,159 sq ft	41
WPD	First Floor East Suite 3	Let		
WPD	Second Floor East Suite 1	Let		
Vacant	Second Floor North Suite 2		3,744 sq ft	19
RD&E (Until May 2022 )	Second Floor North Suite 3		5,371 sq ft	35
Vacant	Second Floor South Suite 4		8,322 sq ft	40
<b>TOTALS</b>			<b>24,596 sq ft</b>	<b>135</b>

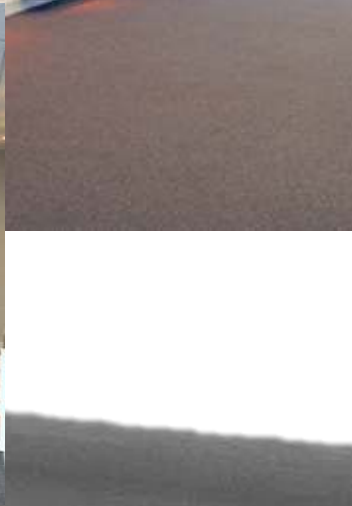




**Osprey House**  
Second Floor Suite

  
**PEARCE**  
PROPERTY CONSULTANTS  
07971 278 386

  
**01392 423 696**  
jll.co.uk/property



# Osprey House

Main Reception and Core



**Osprey House**  
Toilet Facilities





# Osprey House

Externally



# Osprey House

Sowton, Exeter EX2 7WN



Andrew Pearce  
andrew@pearceproperty.com  
www.pearceproperty.com



Kye Daniel  
kye.daniel@eu.jll.com

**DISCLAIMER**  
The material herein is intended as a guide only, no liability for negligence or otherwise is assumed for the material contained herein by Jones Lang LaSalle, its principal or its servants or its agents. No material contained herein shall form the basis of or be part of any agreement and no warranty is given or implied as to the accuracy of the whole or any part of the material. Prospective purchasers/tenants should not rely on the material but should make their own enquiries and satisfy themselves of all aspects of the material. Any liability by Jones Lang LaSalle, its principal, its servants or its agents in any way connected with the brochure, whether or not such liability results from or involves negligence, will not exceed \$1000.00.